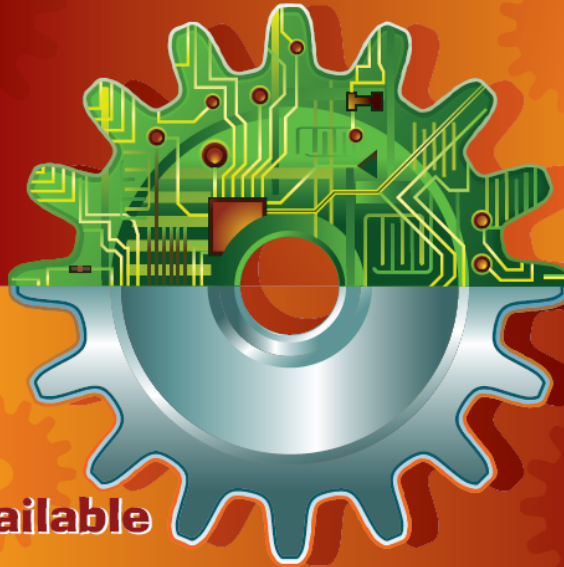
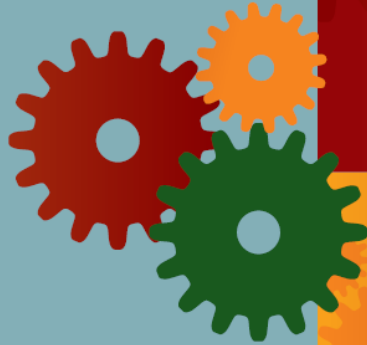


**Train Now!**



**Machinist Jobs Available**

## Start Your New Job Soon

SEVERAL LOCAL COMPANIES HAVE PARTNERED WITH MOUNTAIN VIEW COLLEGE TO HIRE INDIVIDUALS WHO SUCCESSFULLY COMPLETE UPCOMING MACHINE SHOP CLASSES.

**ENROLL NOW – ONLY 8 SLOTS PER CLASS ARE AVAILABLE - GUARANTEED INTERVIEW - YOUR SKILLS GET THE JOB!**

Machine Shop I Lathe	3-3-09 - 4-2-09	Tue -Thur	11:30 a.m. - 3:30 p.m.
Machine Shop II Mill	4-7-09 - 4-30-09	Tue -Thur	11:30 a.m. - 3:30 p.m.
CNC Prog I Lathe	5-5-09 - 5-28-09	Tue -Thur	11:30 a.m. - 3:30 p.m.
CNC Prog II Mill	6-2-09 - 6-25-09	Tue -Thur	11:30 a.m. - 3:30 p.m.
Machining Project	6-30-09 - 7-23-09	Tue - Thur	11:30a.m. - 3:30 p.m.
CNC Prog I Lathe	3-30-09 - 4-22-09	Mon - Wed	6 p.m. - 10 p.m.
CNC Prog II Mill	4-27-09 - 5-20-09	Mon - Wed	6 p.m. - 10 p.m.
Machining Project	5-21-09 - 6-22-09	Mon - Wed	6 p.m. - 10 p.m.

**Cost \$350.00**

**\*All levels of training can be customized to meet your needs!**

**Registration:** Individual students, company, and company employees must pay fees before the first class day for the Continuing Education classes. Fees are accepted in person at the MVC cashier's office via cash, credit card or money orders, or with a credit card by dialing **214-860-8614**. If a payment is mailed, please complete the CTS registration/enrollment form and send it along with a check or money order. Payments that are sent by mail must be received one week prior to the class start date to ensure that all registration processes are completed on time.

For more information please contact **Michael A. Johnson, Sr.**

Phone: (214) 860-8767    michaelj@dcccd.edu    [www.mountainviewcollege.edu/cts](http://www.mountainviewcollege.edu/cts)

4849 West Illinois Avenue, Dallas, Texas 75211

[www.mountainviewcollege.edu](http://www.mountainviewcollege.edu)



**Mountain View College**

DALLAS COUNTY COMMUNITY COLLEGE DISTRICT

*An Equal Opportunity Institution.*

**IT ALL BEGINS HERE.**